

April 30, 2025

The Nifty Bank Index comprises of the most liquid and large Indian Banking stocks. It provides investors and market intermediaries a benchmark that captures the capital market performance of the Indian banks. The Index comprises of maximum 12 companies listed on National Stock Exchange of India (NSE).

Nifty Bank Index is computed using free float market capitalization method.

Nifty Bank Index can be used for a variety of purposes such as benchmarking fund portfolios, launching of index funds, ETFs and structured products.

Index Variant: Nifty Bank Total Returns Index.

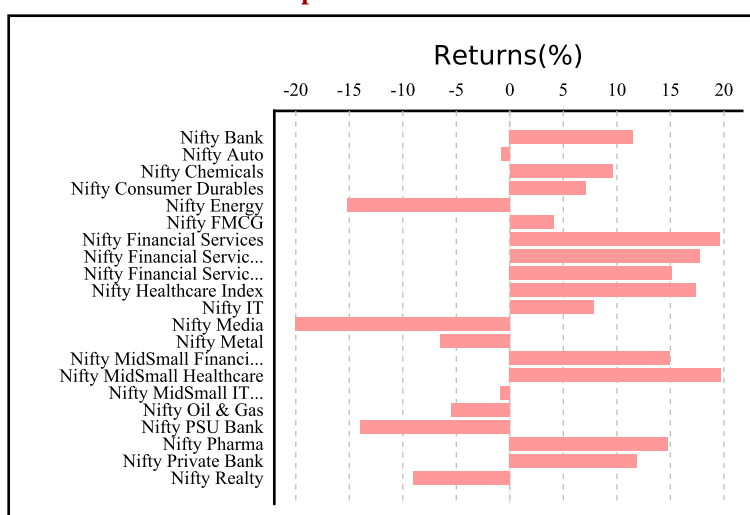
Portfolio Characteristics

Methodology	Periodic Capped Free Float
No. of Constituents	12
Launch Date	September 15, 2003
Base Date	January 01, 2000
Base Value	1000
Calculation Frequency	Real-Time
Index Rebalancing	Semi-Annually

Index Returns (%) #	QTD	YTD	1 Year	5 Years	Since Inception
Price Return	6.83	8.31	11.52	20.67	17.14
Total Return	6.83	8.31	12.51	21.37	18.65

Statistics ##	1 Year	5 Years	Since Inception
Std. Deviation *	17.80	21.34	28.48
Beta (NIFTY 50)	1.03	1.21	1.09
Correlation (NIFTY 50)	0.87	0.86	0.84

1 Year Performance Comparison of Sector Indices



Fundamentals

P/E	P/B	Dividend Yield
13.97	2.35	0.95

Top constituents by weightage

Company's Name	Weight(%)
HDFC Bank Ltd.	27.87
ICICI Bank Ltd.	25.15
Axis Bank Ltd.	8.45
State Bank of India	8.14
Kotak Mahindra Bank Ltd.	8.12
IndusInd Bank Ltd.	4.16
Federal Bank Ltd.	3.63
Bank of Baroda	3.49
IDFC First Bank Ltd.	3.03
AU Small Finance Bank Ltd.	2.87

Based on Price Return Index.

QTD, YTD and 1 year returns are absolute returns. Returns for greater than one year are CAGR returns.

* Average daily standard deviation annualised

Disclaimer: All information contained herewith is provided for reference purpose only. NSE Indices Limited (formerly known as India Index Services & Products Limited-IISL) ensures accuracy and reliability of the above information to the best of its endeavors. However, NSE Indices Limited makes no warranty or representation as to the accuracy, completeness or reliability of any of the information contained herein and disclaim any and all liability whatsoever to any person for any damage or loss of any nature arising from or as a result of reliance on any of the information provided herein. The information contained in this document is not intended to provide any professional advice.

April 30, 2025



Index Methodology

Eligibility Criteria for Selection of Constituent Stocks:

- Companies should form part of Nifty 500 at the time of review. In case, the number of eligible stocks representing a particular sector within Nifty 500 falls below 10, then deficit number of stocks shall be selected from the universe of stocks ranked within top 800 based on both average daily turnover and average daily full market capitalisation based on previous six months period data used for index rebalancing of Nifty 500.
- Companies should form a part of the Banking sector.
- The company's trading frequency should be at least 90% in the last six months.
- The Company should have a minimum listing history of 1 month as on the cutoff date.
- Companies that are allowed to trade in F&O segment are only eligible to be constituent of the index.
- Final selection of 12 companies shall be done based on the free-float market capitalization of the companies.
- Weightage of each stock in the index is calculated based on its free-float market capitalization such that no single stock shall be more than 33% and weightage of top 3 stocks cumulatively shall not be more than 62% at the time of rebalancing.

Index Re-Balancing:

Index is re-balanced on semi-annual basis. The cut-off date is January 31 and July 31 of each year, i.e. For semi-annual review of indices, average data for six months ending the cut-off date is considered. Four weeks prior notice is given to market from the date of change.

Index Governance:

A professional team manages all NSE indices. There is a three-tier governance structure comprising the Board of Directors of NSE Indices Limited, the Index Advisory Committee (Equity) and the Index Maintenance Sub-Committee.

Key Indices

Broad Market Indices	Sectoral Indices	Thematic Indices	Strategy Indices	Fixed Income
Nifty 50	Nifty Bank	Nifty CPSE	Nifty100 Equal Weight	Nifty 10 yr Benchmark G-Sec
Nifty Next 50	Nifty IT	Nifty Commodities	Nifty50 PR 1x Inverse	Nifty 8-13 yr G-Sec
Nifty 100	Nifty PSU Bank	Nifty Energy	Nifty50 PR 2x Leverage	Nifty 4-8 yr G-Sec
Nifty 200	Nifty FMCG	Nifty Shariah 25	Nifty50 Value 20	Nifty 11-15 yr G-Sec
Nifty 500	Nifty Private Bank	Nifty 100 Liquid15	Nifty100 Quality 30	Nifty 15 yr and above G-Sec
Nifty Midcap 50	Nifty Metal	Nifty Infrastructure	Nifty Low Volatility 50	Nifty Composite G-Sec
Nifty Midcap 100	Nifty Financial Services	Nifty Corporate Group	Nifty Alpha 50	Nifty 1D Rate

Contact Us:

Email: indices@nse.co.in | Tel: +91 22 26598386 | Fax: +91 22 26598120

Learn more at: www.niftyindices.com

Bloomberg - NSEBANK Index

Thomson Reuters - .NSEBANK